

# Food & CHEMICALS

## PROFESSIONAL GRADE FEATURES



**MULTI-POSITION LOCK RATCHET** secures hose  
at desired length - Visible on other side

**VERSATILE GUIDE ARM** adjusts to wall,  
floor & ceiling mounting

**HIGH QUALITY ELECTRO-POLISHED NON-CORROSIVE  
STAINLESS STEEL CONSTRUCTION**

**NON-CORROSIVE STAINLESS STEEL FLUID PATH**  
featuring stainless steel swivel with non-toxic  
food grade grease

**HEAVY DUTY STAINLESS STEEL SOLID SPUN  
DISCS WITH ROLLED EDGES** - not stamped, made  
with first of its kind CNC robotic spinning cell

**ENCLOSED FACTORY TUNED AND MATCHED  
CARTRIDGE-STYLE SPRING MOTOR**  
for safe and easy maintenance

**HEAVY GAUGE 1/4" STAINLESS STEEL BASE &  
SUPPORT POST** for maximum stability



### **POSSIBLE FIELDS OF APPLICATION** // // //

- Hygenic Environments
- Corrosive Environments
- Food Grade Washdown
- Food & Chemical Processing Plants
- Pulp & Paper Plants
- Bottling Plants
- Meat Packing

**www.coxreels.com**

800.COX.REEL

P: 480.820.6396

F: 480.820.5132

E: info@coxreels.com





## SS-P, SS-SH & SS-MP SERIES

- Non-corrosive external fluid path with machined from high quality stainless steel 90° full-flow NPT swivel inlet
- Swivel Seals: NITRILE with Non-Toxic Food Grade Grease
- Sturdy single pedestal spring driven reel with space saving design facilitates workplace organization
- SH/MP Series features Coxreels' exclusive Super Hub™ dual axle support system

MODEL	I.D.	FT.	PSI	APRX. LBS.	W x H x L
P-LPL-335-SS	3/8"	35	300	34	6 3/4 x 18 5/8 x 17 1/8"
P-LPL-350-SS	3/8"	50	300	39	6 3/4 x 18 5/8 x 17 1/8"
P-LPL-425-SS	1/2"	25	300	39	7 x 18 5/8 x 17 1/8"
SHL-N-350-SS	3/8"	50	300	44	8 1/4 x 21 1/4 x 19 1/2"
SHL-N-450-SS	1/2"	50	300	46	8 1/4 x 21 1/4 x 19 1/2"
SHL-N-525-SS	3/4"	25	300	45	9 3/8 x 21 1/4 x 19 1/2"
MPL-N-350-SS	3/8"	50	3,000	53	8 1/4 x 21 1/4 x 19 1/2"
MPL-N-450-SS	1/2"	50	3,000	53	8 1/4 x 21 1/4 x 19 1/2"



## SS-T SERIES

- Non-corrosive external fluid path with machined from high quality stainless steel 90° full-flow NPT swivel inlet
- Swivel Seals: NITRILE with Non-Toxic Food Grade Grease
- Sturdy dual pedestal reel features Coxreels' exclusive Super Hub™ dual axle support system

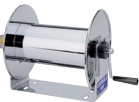
MODEL	I.D.	FT.	PSI	APRX. LBS.	W x H x L
TSHL-N-4100-SS	1/2"	100	300	80	9 3/8 x 25 1/2 x 24"
TSHL-N-550-SS	3/4"	50	300	70	9 3/8 x 25 1/2 x 24"



## SS-EN SERIES

- Non-corrosive external fluid path with machined from high quality stainless steel 90° full-flow NPT swivel inlet
- Swivel Seals: NITRILE with Non-Toxic Food Grade Grease
- Sturdy enclosed reel for aesthetic purposes & greater hose protection

MODEL	I.D.	FT.	PSI	APRX. LBS.	W x H x L
ENL-N-335-SS	3/8"	35	300	46	6 7/8 x 18 7/8 x 19"
ENL-N-350-SS	3/8"	50	300	58	8 1/2 x 21 3/4 x 21 7/8"
ENL-N-450-SS	1/2"	50	300	61	8 1/2 x 21 3/4 x 21 7/8"



## SS-100 SERIES

- Non-corrosive external fluid path with machined from high quality stainless steel 90° full-flow NPT swivel inlet
- Swivel Seals: NITRILE with Non-Toxic Food Grade Grease
- Solid one piece, heavy gauge steel "U" shaped frame

MODEL	I.D.	FT.	PSI	APRX. LBS.	W x H x L
112-4-75-SS	1/2"	75	4,000	21	22 3/4 x 13 x 12"
117-4-225-SS	1/2"	225	4,000	31	22 3/4 x 18 x 17"
117-5-100-SS	3/4"	100	4,000	36	23 1/4 x 18 x 17"



## SS-1125 SERIES

- Non-corrosive external fluid path with machined from high quality stainless steel 90° full-flow NPT swivel inlet
- Swivel Seals: NITRILE with Non-Toxic Food Grade Grease
- Exclusive low profile outlet riser & open drum slot design for flat smooth hose wrap

MODEL	MOTOR OPTION	I.D.	FT.	PSI	APRX. LBS.	W x H x L
1125-4-100-SS	Electric Motor Options Available	1/2"	100	3,000	36	19 1/2 x 18 3/4 x 17 5/8"
1125-4-200-SS		1/2"	200	3,000	39	25 1/2 x 18 3/4 x 17 5/8"
1125-5-100-SS		3/4"	100	3,000	42	26 3/4 x 18 3/4 x 17 5/8"
1125-5-200-SS		3/4"	200	3,000	55	38 3/4 x 18 3/4 x 17 5/8"



## SS-1175 SERIES

- Non-corrosive external fluid path with machined from high quality stainless steel 90° full-flow NPT swivel inlet
- Swivel Seals: NITRILE with Non-Toxic Food Grade Grease
- Exclusive low profile outlet riser & open drum slot design for flat smooth hose wrap

MODEL	MOTOR OPTION	I.D.	FT.	PSI	APRX. LBS.	W x H x L
1175-6-100-SS	Electric Motor options available	1"	100	3,000	70	28 1/8 x 26 1/8 x 24"
1175-6-200-SS		1"	200	3,000	83	36 5/8 x 26 1/8 x 24"

## CHOICE OF MOTORS 1125 & 1175



## PURE FLOW EZ-P SERIES

- Non-corrosive stainless steel air/fluid path with machined from high quality stainless steel 90° full-flow NPT swivel inlet
- Swivel Seals: NITRILE with Non-Toxic Food Grade Grease
- Sturdy single pedestal reel with space saving design facilitates workplace organization

MODEL	I.D.	FT.	PSI	APRX. LBS.	W x H x L
EZ-P-BLL-350	3/8"	50	300	43	7 1/8 x 18 5/8 x 17 5/8"
EZ-P-BHL-350	3/8"	50	6,000	43	7 1/8 x 18 5/8 x 17 5/8"



## PURE FLOW EZ-T SERIES

- Non-corrosive stainless steel air/fluid path with machined from high quality stainless steel 90° full-flow NPT swivel inlet
- Swivel Seals: NITRILE with Non-Toxic Food Grade Grease
- Sturdy dual pedestal reel features Coxreels' exclusive Super Hub™ dual axle support system

MODEL	I.D.	FT.	PSI	APRX. LBS.	W x H x L
EZ-T-BLL-3100	3/8"	50	300	85	9 3/8 x 25 1/2 x 24"
EZ-T-BHL-3100	3/8"	50	6,000	85	9 3/8 x 25 1/2 x 24"



## PURE FLOW 1125 SERIES

- Non-corrosive stainless steel air/fluid path with machined from high quality stainless steel 90° full-flow NPT swivel inlet
- Swivel Seals: NITRILE with Non-Toxic Food Grade Grease
- Exclusive low profile outlet riser & open drum slot design for flat smooth hose wrap

MODEL	I.D.	FT.	PSI	APRX. LBS.	W x H x L
1125P-4-6	1/2"	100	6,000	36	19 3/4 x 18 5/8 x 17 5/8"
1125P-4-8	1/2"	150	6,000	37	21 3/4 x 18 5/8 x 17 5/8"
1125P-4-12	1/2"	200	6,000	39	25 3/4 x 18 5/8 x 17 5/8"

This selection only represents a sample of products applicable in this industry. Please visit us online or consult the factory for more product options.